



WILLOW DENE SCHOOL

Friday 31st March 2023



Where flowers bloom, so does hope



Head Teacher's Message

This newsletter will be reaching you on the last day of term.

A lot has happened in our lives, both amazing and awful in the last two weeks. All of these events and the responses of all of you in the wider school community symbolises why Willow Dene is the school it is. The thread of love, care and respect that has flowed across all of the events of the past few weeks has surrounded us all and encouraged us to keep doing the absolute best we can for all our children.

The sad death of JJ this weekend has meant that we are finishing the term on a very sad note. As a young man who touched a lot of people during his time with us. His loss has had a huge impact on the school community. His love of all living things, care for the environment and passion for growing made us all better people.



Head Teacher's Message Continued.



Last Friday, we started our 30 acts of kindness for Ramadan. We have far exceeded our target number as the school has been filled with kind acts. This newsletter contains just a few.

On Wednesday last week, many of our talented staff were involved in delivering our 'Discovery Power Day' to the children. Across the school children



experienced learning related to time (History) and place (Geography). From visiting the stone age and building Stone Henge, experiencing an art sensory story to archaeology for beginners. Children were able to experience artifacts and explore.



On Wednesday evening, we held our pamper evening for Teenage Siblings, which again was supported by our staff team

who delivered a whole range of activities. Activities such as manicures, foot spas, baking and older siblings a chance to get to know each other and to get to know us. During the session new relationships developed and we had a chance to talk about what sort of other activities we could do together. This has made us very conscious that we could do more with this group of brothers and sisters that would help.

On Thursday, our eagerly awaited Spring Fling took place. The halls were full of children, staff and families enjoying the live band, the stalls selling



children's wares and the games. We made in excess of £900 in support of Friends of Willow Dene. Moreover, we enjoyed celebrating and being together.

Shakespeare Schools Festival

This week we have had the privilege of watching our Shakespeare for school's cast performing Midsummer Night's Dream. On Monday this performance was to say goodbye to Tracey Russell, Assistant Director of Children's Services of Greenwich. Tracey is retiring but over the years has been a tremendous supporter of Willow Dene and will be greatly missed. Tracey very much enjoyed the performance.

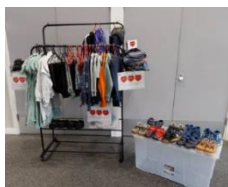
On Tuesday evening, we were at the Albany Theatre in Deptford watching the Shakespeare cast performing in the festival itself. We were incredibly proud of our children who were confident, creative and entertaining. We were all clapping and cheering along with the rest of the audience at the end.

On Tuesday morning, we met with our Year 11 parents along with the local authority to share the amazing news that we are nearly successfully through our 6th form process and that we are planning to name Willow Dene for all Year 11 rather than a reduce number of children. Safe to say that everyone at the meeting left happy.

On Thursday morning we started the day with a cooked breakfast provided and tended to by our lovely leadership team who had their opportunity to show off their cooking skills. Events like these bring us all together and are a great opportunity to say thank you for everyone's hard work.

We wish you a happy and safe spring holiday. We will see you in 2 weeks on the Monday 17th April 2023 ready to go again.

Rachel



Our Pre-Loved Clothes Shop is NOW OPEN!!

We are determined to reduce fabric waste and the impact it has on the environment so have launched our Pre-Loved Clothes Shop!

We have lots of fantastic items for you to choose from, all in return for a small donation to our FOWD charity. Look out for our shop at Parent Coffee morning and events, and please do ask to see the items when you next visit school.



We already have some very happy customers.



WILLOW DENE SCHOOL
CoSD COMMITTEE

We need your help!

Can you donate and help to save our planet



Winter clothing

Clothing that no longer fits or you no longer need



School uniform

Any pre-loved school uniform



Christmas clothing

Any festive clothing to support Christmas jumper day!



IMPORTANT DATES

End of Term:

Friday 31st March 2023

Summer Term begins:

Monday 17th April 2023

Bank holidays

Monday 1st May 2023

Monday 8th May 2023



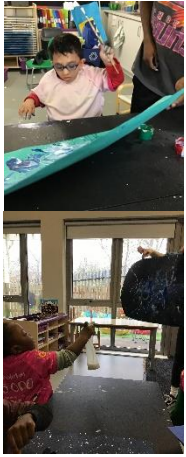
Friends of Willow Dene would like to thank everyone who supported our Spring Fling event by attending or donating.

We managed to raise **£922.65** which was just fantastic.

Emergency Half Term Information

The stickers in your child's home school contact book are there in case you need any advice or help during the holiday. You can call or text and leave a message and a senior leader will get back to you.

GREENFINCH CLASS



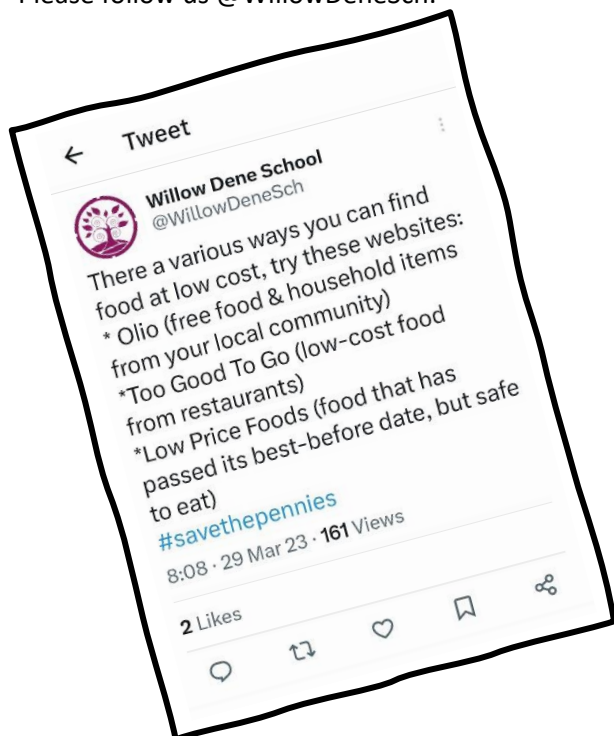
Greenfinch class have had a busy term with lots of exciting learning, events and activities happening! One of many events included a visit from the National Maritime Museum at the start of this half term, who reminded us of our visit to their museum earlier in the year. They supported us to create some artwork which they will be displaying around the museum.

We enjoyed this so much that we incorporated the theme of seascapes into our art lessons, where we applied the techniques of artist Frank Bowling to create some beautiful seascapes and sea monsters too! We layered different artistic techniques on top of our artwork each week, just like Frank Bowling does when creating his masterpieces. If you get the chance, pop by the National Maritime Museum, or our classroom, to see our artwork on display!



We have been posting Tweets about Willow

Dene since 2014. Posting all about our children, our news and the exciting things that we get up to in school. Please follow us @WillowDeneSch.



WHAT'S ON



SUMMER PLAY SCHEME RETURNS!



The Willow Dene summer scheme is a specialist, two week play based programme commissioned by the Royal Borough of Greenwich as part of the Short Breaks Core Offer for primary aged children from reception to Year 5.

WHEN: Week 1 start date **24th July 2023**
Week 2 start date **31st July 2023**

At Summer scheme children are able to enjoy a range of exciting activities designed to captivate, inspire and nurture their interests. Children will have access to specialist areas such as eye-gaze, outdoor facilities, on-site swimming sessions and more. We are also delighted to announce the return of off-site trips. Our playscheme is staffed by Willow Dene employees which means children will continue to receive an exceptional quality of care in a familiar setting.

If you are interested in booking a place for your child at our Summer Play Scheme then please contact the RBG Short Breaks team.

The deadline to register your interest with short breaks is the 29th May 2023. Its advisable to sign up as early as possible - Due to popularity places fill quickly.

Please be aware the programme is available to those children who:

- Aged 4-10 (up to and including Year 5)
- Have had a social care assessment
- AND are in receipt of a specialist care package from the Disabled Children's Social Work team (DCSWT)

If you are unsure that your child meets these criteria, you can contact the Short Breaks team for advice and support. If your child is not eligible to access the Willow Dene summer scheme, there are alternative programmes that the short breaks team will be more than happy to discuss with you.

Short Breaks team contact information:
Tel: 0208 921 3002
Email: Short-Breaks-Referrals@royalgreenwich.gov.uk



For more information on what we offer, contact this years organiser Susan Bance
Tel: 020 8854 9841 Email: SBance@willowdene.compassps.uk

Half Term Cost Saving Ideas



Children eat for under £1 or free

ASDA café

Kids eat for £1 at Asda. Each child is entitled to a meal when they spend £1. Maximum of 1 meal from the kids menu per child, per day.



Ikea

Kids eat from 95p Your little ones can enjoy Kids Pasta with Tomato Sauce and a soft drink for 95p or any other Kids Meal for £1.50.



Lambing Day & Food Festival



Sunday 23rd April
11am - 4pm
Family Ticket £5
Woodlands Farm,
Shooters Hill



Carers get Free admission at National Trust and English Heritage properties



Go to our website for more information.
<https://www.rsbc.org.uk/calendar-of-activities/>

April Programme of Activities

U - Re Occurring Session

Week 1 - SPRING BREAK					
Monday 3	Tuesday 4	Wednesday 5	Thursday 6	Friday 7	Saturday 8
Assistive Tech All ages & Families 2pm - 6pm Life Without Limits Centre/Zoom	Animal Afternoon at the LWLC! 3:30 - 4:30pm	Royal Spring Fun Day All Ages & Families 11am-2pm Life Without Limits Centre	Sisterhood: Girls Get Together At Lunch @Pizza Express 11:30-2:00pm	BANK HOLIDAY	No Activities
BIB workshop 13-25yrs 1pm - 3pm Zoom	BIB workshop 13-25yrs 1pm - 3pm Zoom	BIB workshop 13-25yrs 1pm - 3pm Zoom	Assistive Tech All ages & Families 3pm - 6pm Life Without Limits Centre/Zoom		
Audio Book Club 8 - 25yrs 4pm - 5pm Life Without Limits Centre & Zoom			Audio Book Club 8 - 25yrs 4pm - 5pm Life Without Limits Centre & Zoom		

Week 2 – SPRING BREAK					
Monday 10	Tuesday 11	Wednesday 12	Thursday 13	Friday 14	Saturday 15
BANK HOLIDAY	Theatre trip to Young Vic! 'Further Than the Furthest thing' 6pm – 9:30pm	Percussion Play Workshop LWLC 11am-2pm 11-25yrs Selhurst Stadium tour 11am – 1pm Sensory Story Time 0 - 8yrs 1pm - 2pm Zoom	Stepney Green Farm Workshop 11am – 1pm BIB WORKSHOP 13-25yrs 1pm – 3pm Zoom Assistive Tech All ages & Families 2pm – 6pm Life Without Limits Centre/Zoom Audio Book Club 8 – 25yrs 4pm - 5pm Life Without Limits Centre & Zoom	The RSBC's Great Bake Off LWLC 2PM-4:30PM BIB workshop 13-25yrs 1pm – 3pm Zoom Assistive Tech All ages & Families 2pm – 6pm Life Without Limits Centre/Zoom	No Activities

Week 3					
Monday 17	Tuesday 18	Wednesday 19	Thursday 20	Friday 21	Saturday 22
Assistive Tech All ages & Families 2pm – 6pm Life Without Limits Centre/Zoom Audio Book Club 8 – 25yrs 5pm - 6pm Life Without Limits Centre & Zoom	Sisterhood Session Limiting Beliefs 5pm-6pm Connecting Families Early Years 7:30pm - 9:00pm Zoom	No Activities	Assistive Tech All ages & Families 2pm – 6pm Life Without Limits Centre/Zoom Audio Book Club 8 – 25yrs 5pm - 6pm Life Without Limits Centre & Zoom	Assistive Tech All ages & Families 2pm – 6pm Life Without Limits Centre/Zoom	Supper Squad 11am-2pm TBC
Week 4					
Monday 24	Tuesday 25	Wednesday 26	Thursday 27	Friday 28	Saturday 29
Assistive Tech All ages & Families 2pm – 6pm Life Without Limits Centre/Zoom Audio Book Club 8 – 25yrs 5pm - 6pm Life Without Limits Centre & Zoom	Moving On Up 4:30pm – 5:15pm Zoom Creative Session Life Without Limits Centre/Zoom 5pm-6pm	Sensory Story Time 0 - 8yrs 1pm - 2pm Zoom	Assistive Tech All ages & Families 2pm – 6pm Life Without Limits Centre/Zoom	Assistive Tech All ages & Families 2pm – 6pm Life Without Limits Centre/Zoom	Crystal Palace HAWB 11am-2pm